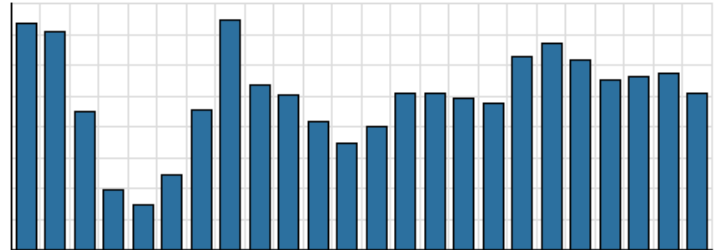


**Monthly Stats Brief Narrative**

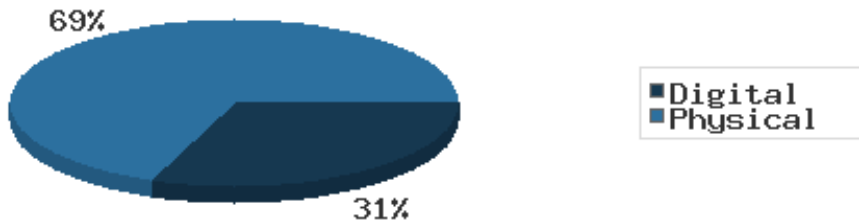
Through December 2021, the number of patrons entering our buildings increased system-wide compared to this same time year-to-date the previous year. Combined physical and digital use of library materials increased year-to-date compared to 2020. About 6% of our registered cardholders checked out a physical item this past month, while about 2% of registered cardholders checked out a digital item.

District Total Checkouts Over 24 Months



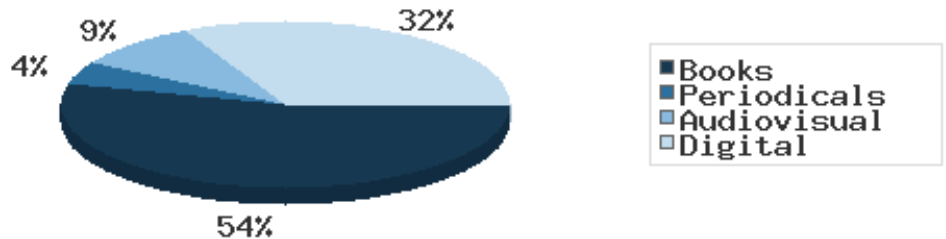
Digital usage has comprised about 28% of total materials use year-to-date through December 2021, and digital usage slightly increased from this time in 2020.

Digital vs. Physical Circulation YTD



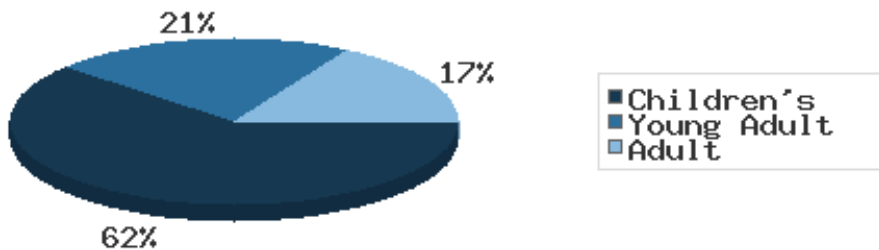
In 2021 BDL spent \$42,439.73 on digital resources and \$137,549.30 on print and audiovisual materials.

Year-to-Date Materials Expenditures



In December 2021, BDL patrons saved \$89,347.86 by checking out 7,614 physical items from the library. Our programming for all ages and our digital services further increase the library's value to the community, bringing the total estimated value to \$110,663.80.

Programs Offered in 2021 YTD



Compared to this time year-to-date 2020, the number of programs BDL offered has greatly increased. Attendance at programs greatly decreased over this same period.

See the full statistical report, starting on the next page, for details and more graphs. The most up-to-date stats are always available online and interactive at <https://www.BranchDistrictLibrary.org/stats>.

## Attendance

December 2021

	BDL Monthly Total	BDL YTD	BDL Year End (Year-over-Year Change)				
			2020	2019	2018	2017	2016
<b>Attendance</b>	6,408	71,402 (+19%)	63,336 (-66%)	183,677 (-4%)	191,866 (-1%)	193,922 (-4%)	200,991 (+3%)
<b>Curbside Service Uses (Tracking since 2020)</b>	14	14	0	0	0	0	0
<b>Hours Open</b>	976.00	10,569.00 (+48%)	7,132.50 (-37%)	11,250.25 (-9%)	12,387.00 (+14%)	10,869.15 (0%)	10,877.50 (+25%)
<b>Number of Hours Scheduled Open Each Week (Tracking Since 1/2018)</b>	239.00		237.00 (-2%)	241.00 (-2%)	245.00	0.00	0.00

## Patrons

December 2021

	BDL Monthly Total	BDL YTD	BDL Year End (Year-over-Year Change)				
			2020	2019	2018	2017	2016
<b>Population in our Service Area (Tracking Since 2018)</b>	44,959	44,996 (avg) (+0%)	44,931 (avg) (0%)	45,093 (avg) (0%)	45,113 (avg)	0 (avg)	0 (avg)
<b>Library Card Holders</b>	22,791	22,337 (avg) (+5%)	21,365 (avg) (+4%)	20,493 (avg) (-4%)	21,350 (avg) (-16%)	25,346 (avg) (+3%)	24,554 (avg) (+4%)
<b>Patrons Who Checked Out a Physical Item</b>	1,458	1,359 (avg) (+23%)	1,102 (avg) (-48%)	2,136 (avg) (-2%)	2,180 (avg) (-5%)	2,305 (avg) (-1%)	2,336 (avg) (-1%)
<b>New Library Card Holders Added</b>	71	732 (-44%)	1,304 (+111%)	618 (-39%)	1,021 (+21%)	844 (-15%)	989 (-9%)
<b>In-House Holds Filled for Our Library Card Holders</b>	874	10,696 (+13%)	9,467 (-10%)	10,527 (-4%)	10,987 (-6%)	11,650 (+12%)	10,407 (+2%)
<b>Active Hoopla Users</b>	275	291 (avg) (-10%)	322 (avg) (+11%)	290 (avg) (+14%)	255 (avg) (+50%)	170 (avg) (+92%)	89 (avg)
<b>Active OverDrive Users</b>	230	223 (avg) (-5%)	234 (avg) (+10%)	213 (avg) (+18%)	180 (avg) (+27%)	143 (avg) (-1%)	144 (avg) (-1%)

## Physical Collection

Tracking Item-Type Breakdown Since 8/2017

December 2021

	BDL Monthly Total	BDL YTD	BDL Year End (Year-over-Year Change)				
			2020	2019	2018	2017	2016
<b>Physical Books and All other Print Materials in the Catalog</b>	91,417		91,278 (-8%)	98,689 (-2%)	100,253 (0%)	100,293	0
<b>Physical Audiobooks in the Catalog</b>	1,875		1,949 (+9%)	1,783 (-5%)	1,881 (+2%)	1,852	0
<b>Physical Video Materials in the Catalog</b>	11,646		11,352 (-1%)	11,460 (+8%)	10,579 (+1%)	10,519	0
<b>Physical Music Recordings in the Catalog</b>	42		178 (+12%)	159 (-53%)	337 (-2%)	345	0
<b>TOTAL Physical Items in the Catalog</b>	<b>104,980</b>		<b>105,257 (-6%)</b>	<b>112,053 (-1%)</b>	<b>113,050 (+0%)</b>	<b>113,009 (-11%)</b>	<b>126,407 (-4%)</b>

## Digital Collection

Tracking Since 8/2017

December 2021

	BDL Monthly Total	BDL YTD	BDL Year End (Year-over-Year Change)				
			2020	2019	2018	2017	2016
Ebooks in All Digital Collections	648,146		480,691 (+30%)	370,666 (+21%)	306,595 (+33%)	230,178	0
Audiobooks in All Digital Collections	162,946		128,892 (+50%)	86,004 (+19%)	71,995 (+36%)	52,833	0
Video Materials in All Digital Collections	22,520		17,791 (+9%)	16,267 (+14%)	14,229 (-10%)	15,767	0
Music Recordings in All Digital Collections	21,347		273,294 (+1%)	271,614 (+13%)	239,705 (-14%)	280,259	0
Periodicals in All Digital Collections	3,881		3,668	0	0	0	0
<b>TOTAL of All Digital Collections</b>	<b>858,840</b>		<b>904,336 (+21%)</b>	<b>744,551 (+18%)</b>	<b>632,524 (+9%)</b>	<b>579,037</b>	<b>0</b>

## Total Collection

Tracking Since 8/2017

December 2021

	BDL Monthly Total	BDL YTD	BDL Year End (Year-over-Year Change)				
			2020	2019	2018	2017	2016
Combined Physical Items	104,980		105,257 (-6%)	112,053 (-1%)	113,050 (+0%)	113,009 (-11%)	126,407 (-4%)
Combined Digital Collections	858,840		904,336 (+21%)	744,551 (+18%)	632,524 (+9%)	579,037	0
<b>TOTAL of all Collections</b>	<b>959,939</b>		<b>1,009,593 (+18%)</b>	<b>856,604 (+15%)</b>	<b>745,574 (+8%)</b>	<b>692,046 (+447%)</b>	<b>126,407 (-4%)</b>

## Use of Physical Items

December 2021

	BDL Monthly Total	BDL YTD	BDL Year End (Year-over-Year Change)				
			2020	2019	2018	2017	2016
Checkouts of Cataloged Items	5,451	68,460 (+31%)	52,227 (-53%)	110,285 (-3%)	113,128 (-6%)	120,916 (+2%)	118,595 (-3%)
Renewals of Cataloged Items	929	8,639 (+20%)	7,181 (-47%)	13,490 (-1%)	13,607 (-8%)	14,804 (-4%)	15,480 (+0%)
Items Used in the Library But Not Checked Out	116	2,350 (-63%)	6,404 (+54%)	4,166 (+49%)	2,803 (-8%)	3,050 (+126%)	1,351 (+7,011%)
Checkouts of Uncataloged Items	170	1,505 (+50%)	1,001 (-70%)	3,294 (-16%)	3,904 (+38%)	2,839 (-38%)	4,578 (+4%)
Requests from BDL Patrons for Items at Other MeLCat Libraries, Actually Fulfilled	498	6,981 (+52%)	4,599 (-53%)	9,873 (+1%)	9,777 (+20%)	8,169 (+15%)	7,112 (+16%)
Requests from Other MeLCat Libraries for Items at BDL, Actually Fulfilled	450	5,712 (+80%)	3,175 (-58%)	7,582 (-23%)	9,810 (+25%)	7,867 (+11%)	7,068 (+46%)
<b>TOTAL Use of Physical Items</b>	<b>7,614</b>	<b>93,647 (+26%)</b>	<b>74,587 (-50%)</b>	<b>148,690 (-3%)</b>	<b>153,029 (-3%)</b>	<b>157,645 (+2%)</b>	<b>154,184 (+1%)</b>

## Use of Digital Resources

December 2021

	BDL Monthly Total	BDL YTD	BDL Year End (Year-over-Year Change)				
			2020	2019	2018	2017	2016
OverDrive Checkouts	1,087	13,294 (+2%)	13,051 (+21%)	10,822 (+14%)	9,501 (+21%)	7,823 (+4%)	7,502 (+2%)
Hoopla Checkouts	934	12,507 (-8%)	13,604 (+9%)	12,530 (-2%)	12,796 (+20%)	10,669 (+96%)	5,432
All Other Digital Services	521	10,131 (+42%)	7,140 (-33%)	10,604 (+11%)	9,572 (-72%)	34,047 (-46%)	62,788 (+38%)
<b>TOTAL Use of Digital Resources</b>	<b>2,542</b>	<b>36,284 (+4%)</b>	<b>34,861 (+3%)</b>	<b>33,956 (+7%)</b>	<b>31,869 (-39%)</b>	<b>52,539 (-31%)</b>	<b>75,722 (+43%)</b>

## Total Item Usage

December 2021

	BDL Monthly Total	BDL YTD	BDL Year End (Year-over-Year Change)				
			2020	2019	2018	2017	2016
Combined Checkouts of Physical Items	7,614	93,647 (+26%)	74,587 (-50%)	148,690 (-3%)	153,029 (-3%)	157,645 (+2%)	154,184 (+1%)
Combined Use of Digital Resources	2,542	36,284 (+4%)	34,861 (+3%)	33,956 (+7%)	31,869 (-39%)	52,539 (-31%)	75,722 (+43%)
<b>TOTAL Uses of All BDL Items</b>	<b>10,156</b>	<b>129,931 (+19%)</b>	<b>109,448 (-40%)</b>	<b>182,646 (-1%)</b>	<b>184,898 (-12%)</b>	<b>210,184 (-9%)</b>	<b>229,906 (+12%)</b>

## Cataloging

December 2021

	BDL Monthly Total	BDL YTD	BDL Year End (Year-over-Year Change)				
			2020	2019	2018	2017	2016
Physical Items Added to the Catalog	472	11,665 (+17%)	9,938 (+2%)	9,719 (-12%)	11,056 (+0%)	11,009 (-1%)	11,091 (+29%)
Physical Items Deleted from the Catalog	403	16,482 (-3%)	17,003 (+58%)	10,769 (-2%)	10,941 (-55%)	24,366 (+53%)	15,968 (+84%)

## Reference Questions

December 2021

	BDL Monthly Total	BDL YTD	BDL Year End (Year-over-Year Change)				
			2020	2019	2018	2017	2016
General Reference Questions in Person	700	8,431 (+94%)	4,347 (-50%)	8,748 (+32%)	6,641 (-12%)	7,537 (+20%)	6,285 (+124%)
Questions via Telephone Calls	435	5,765 (+26%)	4,559 (+11%)	4,111 (+6%)	3,866 (-24%)	5,079 (+10%)	4,622 (+60%)
Reference Questions Delivered Online	15	275 (+13%)	243 (-14%)	281 (+85%)	152 (-35%)	233 (-23%)	304 (+34%)
In-Person Questions on Computer or Internet Use	314	3,675 (+33%)	2,767 (-63%)	7,505 (+6%)	7,068 (-3%)	7,285 (+11%)	6,568 (+18%)
In-Person Questions about Our Online Databases	6	142 (+33%)	107 (-69%)	349 (-15%)	409 (+13%)	363 (+114%)	170 (+85%)
In-Person Tax Form Questions	1	233 (-19%)	286 (-12%)	326 (-37%)	518 (+5%)	493 (+4%)	473 (-18%)
<b>TOTAL of All Reference Questions</b>	<b>1,471</b>	<b>18,521 (+50%)</b>	<b>12,309 (-42%)</b>	<b>21,320 (+14%)</b>	<b>18,654 (-11%)</b>	<b>20,990 (+14%)</b>	<b>18,422 (+52%)</b>

## Notary Services

Began 9/2017

December 2021

	BDL Monthly Total	BDL YTD	BDL Year End (Year-over-Year Change)				
			2020	2019	2018	2017	2016
Patrons Who Used our Free Notary Services	8	69 (+50%)	46 (-52%)	95 (+44%)	66 (+371%)	14	0
Documents Notarized	10	112 (+107%)	54 (-56%)	124 (+85%)	67 (+253%)	19	0

## MeLCat

December 2021

	BDL Monthly Total	BDL YTD	BDL Year End (Year-over-Year Change)				
			2020	2019	2018	2017	2016
Requests from BDL Patrons for Items at Other MeLCat Libraries	524	7,375 (+47%)	5,026 (-52%)	10,538 (+1%)	10,462 (+20%)	8,699 (+14%)	7,643 (+5%)
Requests from BDL Patrons for Items at Other MeLCat Libraries, Actually Fulfilled	498	6,981 (+52%)	4,599 (-53%)	9,873 (+1%)	9,777 (+20%)	8,169 (+15%)	7,112 (+16%)
Requests from Other MeLCat Libraries for Items at BDL	468	6,067 (+49%)	4,067 (-52%)	8,405 (-18%)	10,296 (+29%)	7,994 (+13%)	7,096 (+18%)
Requests from Other MeLCat Libraries for Items at BDL, Actually Fulfilled	450	5,712 (+80%)	3,175 (-58%)	7,582 (-23%)	9,810 (+25%)	7,867 (+11%)	7,068 (+46%)

## Programs Held

December 2021

	BDL Monthly Total	BDL YTD	BDL Year End (Year-over-Year Change)				
			2020	2019	2018	2017	2016
Early Childhood Literacy Programs Held (Tracking since 2021)	9	116	0	0	0	0	0
Juvenile Programs Held	51	290 (-47%)	551 (-31%)	804 (+10%)	730 (+1%)	720 (+19%)	604 (+5%)
Young Adult Programs Held	21	131 (-5%)	138 (-55%)	304 (-10%)	338 (+41%)	239 (+47%)	163 (+8%)
Adult Programs Held	20	114 (-56%)	257 (+54%)	167 (+23%)	136 (-7%)	146 (-34%)	220 (+40%)
All-Ages Programs Held (Tracking since 2021)	14	80	0	0	0	0	0
Early Childhood Literacy Summer Reading Programs Held (Tracking since 2021)	0	9	0	0	0	0	0
Juvenile Summer Reading Events Held	0	96	0	173 (+52%)	114 (+20%)	95 (+7%)	89 (+6%)
Young Adult Summer Reading Events Held	0	25	0	61 (+24%)	49 (-14%)	57 (+97%)	29 (-66%)
Adult Summer Reading Events Held	0	27	0	17 (+467%)	3	0	3 (-40%)
All-Ages Summer Reading Programs Held (Tracking since 2021)	0	26	0	0	0	0	0
Computer Classes Held	0	1	1 (-99%)	81 (+305%)	20 (-9%)	22 (+57%)	14 (-36%)
<b>TOTAL of All Programs</b>	<b>115</b>	<b>1,636 (+73%)</b>	<b>947 (-41%)</b>	<b>1,607 (+16%)</b>	<b>1,390 (+9%)</b>	<b>1,279 (+14%)</b>	<b>1,122 (+4%)</b>

## Program Attendance

December 2021

	BDL Monthly Total	BDL YTD	BDL Year End (Year-over-Year Change)				
			2020	2019	2018	2017	2016
Attendees at Early Childhood Literacy Programs (Tracking since 2021)	92	1,389	0	0	0	0	0
Attendees at Juvenile Programs	705	4,270 (-83%)	25,317 (+73%)	14,654 (-7%)	15,725 (+2%)	15,351 (+48%)	10,371 (+23%)
Attendees at Young Adult Programs	84	817 (-75%)	3,204 (+29%)	2,489 (-23%)	3,218 (-15%)	3,806 (+276%)	1,011 (+14%)
Attendees at Adult Programs	115	1,971 (-88%)	16,263 (+519%)	2,627 (+33%)	1,970 (0%)	1,979 (-3%)	2,048 (-5%)
Attendees at All-Ages Programs (Tracking since 2021)	272	4,547	0	0	0	0	0
Attendees at Early Childhood Literacy Summer Reading Programs (Tracking since 2021)	0	146	0	0	0	0	0
Attendees at Juvenile Summer Reading Events	0	1,798	0	4,186 (+8%)	3,864 (+24%)	3,116 (-20%)	3,904 (+56%)
Attendees at Young Adult Summer Reading Events	0	181	0	279 (-16%)	333 (-50%)	671 (+127%)	295 (+14%)
Attendees at Adult Summer Reading Events	0	179	0	310 (+265%)	85	0	21 (-73%)
Attendees at All-Ages Summer Programs (Tracking since 2021)	0	730	0	0	0	0	0
Attendees at Computer Classes	0	1	0	26 (+30%)	20 (-5%)	21 (+75%)	12 (-59%)
<b>TOTAL of All Program Attendance</b>	<b>1,268</b>	<b>16,029 (-64%)</b>	<b>44,784 (+82%)</b>	<b>24,571 (-3%)</b>	<b>25,215 (+1%)</b>	<b>24,944 (+41%)</b>	<b>17,662 (+23%)</b>

## Summer Reading Overview

December 2021

	BDL Monthly Total	BDL YTD	BDL Year End (Year-over-Year Change)				
			2020	2019	2018	2017	2016
Juveniles Signed Up for Summer Reading Program	0	407 (+347%)	91 (-87%)	711 (-5%)	747 (-35%)	1,153 (+19%)	967 (+13%)
Young Adults Signed up for Summer Reading Program	0	77 (+166%)	29 (-78%)	134 (-65%)	378 (-2%)	385 (+241%)	113 (-64%)
Adults Signed Up for Summer Reading Program	0	122 (+270%)	33 (-79%)	159 (-36%)	248 (+112%)	117 (+36%)	86 (+1%)
Juveniles who Completed Summer Reading Program	0	220 (+142%)	91 (-76%)	385 (+48%)	260 (-50%)	518 (+13%)	459 (-10%)
Young Adults who Completed Summer Reading Program	0	38 (+31%)	29 (-63%)	79 (-41%)	135 (-50%)	268 (+332%)	62 (-49%)
Adults who Completed Summer Reading Program	0	30 (-9%)	33 (-72%)	118 (-28%)	165 (+72%)	96 (+60%)	60 (+7%)
Juvenile Summer Reading Events Held	0	96	0	173 (+52%)	114 (+20%)	95 (+7%)	89 (+6%)
Young Adult Summer Reading Events Held	0	25	0	61 (+24%)	49 (-14%)	57 (+97%)	29 (-66%)
Adult Summer Reading Events Held	0	27	0	17 (+467%)	3	0	3 (-40%)
Attendees at Juvenile Summer Reading Events	0	1,798	0	4,186 (+8%)	3,864 (+24%)	3,116 (-20%)	3,904 (+56%)
Attendees at Young Adult Summer Reading Events	0	181	0	279 (-16%)	333 (-50%)	671 (+127%)	295 (+14%)
Attendees at Adult Summer Reading Events	0	179	0	310 (+265%)	85	0	21 (-73%)

## Summer Reading Program Signups

December 2021

	BDL Monthly Total	BDL YTD	BDL Year End (Year-over-Year Change)				
			2020	2019	2018	2017	2016
Juveniles Signed Up for Summer Reading Program	0	407 (+347%)	91 (-87%)	711 (-5%)	747 (-35%)	1,153 (+19%)	967 (+13%)
Young Adults Signed up for Summer Reading Program	0	77 (+166%)	29 (-78%)	134 (-65%)	378 (-2%)	385 (+241%)	113 (-64%)
Adults Signed Up for Summer Reading Program	0	122 (+270%)	33 (-79%)	159 (-36%)	248 (+112%)	117 (+36%)	86 (+1%)
<b>TOTAL Summer Reading Program Signups</b>	<b>0</b>	<b>606 (+296%)</b>	<b>153 (-85%)</b>	<b>1,004 (-27%)</b>	<b>1,373 (-17%)</b>	<b>1,655 (+42%)</b>	<b>1,166 (-7%)</b>

## Summer Reading Program Completions

December 2021

	BDL Monthly Total	BDL YTD	BDL Year End (Year-over-Year Change)				
			2020	2019	2018	2017	2016
Juveniles who Completed Summer Reading Program	0	220 (+142%)	91 (-76%)	385 (+48%)	260 (-50%)	518 (+13%)	459 (-10%)
Young Adults who Completed Summer Reading Program	0	38 (+31%)	29 (-63%)	79 (-41%)	135 (-50%)	268 (+332%)	62 (-49%)
Adults who Completed Summer Reading Program	0	30 (-9%)	33 (-72%)	118 (-28%)	165 (+72%)	96 (+60%)	60 (+7%)
<b>TOTAL Summer Reading Program Completions</b>	<b>0</b>	<b>288 (+88%)</b>	<b>153 (-74%)</b>	<b>582 (+4%)</b>	<b>560 (-37%)</b>	<b>882 (+52%)</b>	<b>581 (-16%)</b>

## Library-Provided Computer Services

December 2021

	BDL Monthly Total	BDL YTD	BDL Year End (Year-over-Year Change)				
			2020	2019	2018	2017	2016
One-hour sessions on Library Wifi	23,851	290,877 (+2%)	284,892 (-40%)	474,750 (+2%)	465,219 (+9%)	425,714 (+4%)	410,437 (+17%)
Desktop, Laptop, and Tablet Computers Available for Public Use	92		88	88 (-1%)	89 (+22%)	73	73
Sessions on Library-Provided Computers	1,335	11,463 (+22%)	9,604 (-73%)	35,720 (-22%)	45,687 (+3%)	44,181 (+6%)	41,513 (-11%)
Hours Library-Provided Computers Used (Tracking Since 2018)	816.19	6,735.18 (+12%)	6,031.58 (-75%)	24,280.36 (-2%)	24,701.55	0.00	0.00
Desktop, Laptop, and Tablet Computers Available for Staff Use	55		52	52 (+4%)	50 (+22%)	41	41

## Website Stats

December 2021

	BDL Monthly Total	BDL YTD	BDL Year End (Year-over-Year Change)				
			2020	2019	2018	2017	2016
Monthly Website Sessions	2,905	46,481 (+12%)	41,586 (-28%)	58,161 (+28%)	45,594 (-38%)	73,326 (-2%)	75,139 (+3%)
Monthly Website Page Views	5,705	116,164 (+26%)	92,094 (-29%)	129,778 (+9%)	118,634 (-33%)	177,799 (-2%)	182,084 (+7%)

## Faxes, Prints, and Sales

December 2021

	BDL Monthly Total	BDL YTD	BDL Year End (Year-over-Year Change)				
			2020	2019	2018	2017	2016
<b>Fax Pages Received</b>	23	141 (-5%)	149 (-57%)	350 (-16%)	419 (+61%)	260 (+19%)	219 (+27%)
<b>Fax Pages Sent</b>	586	6,515 (+66%)	3,935 (-59%)	9,524 (+3%)	9,249 (+138%)	3,879 (+123%)	1,741 (-7%)
<b>Free Prints for Job Seekers, Students, etc.</b>	272	3,222 (+195%)	1,091 (-61%)	2,796 (-23%)	3,631 (+16%)	3,128 (+9%)	2,878 (+23%)
<b>Black and White Patron Prints (Tracking Since 6/2016)</b>	4,276	55,206 (+66%)	33,177 (-56%)	75,818 (-6%)	81,016 (+7%)	75,606 (+113%)	35,561
<b>Color Patron Prints (Tracking Since 6/2016)</b>	1,164	9,731 (+107%)	4,709 (-58%)	11,299 (-8%)	12,285 (+20%)	10,253 (+154%)	4,036
<b>Flash Drives Sold (Tracking Since 6/2016)</b>	2	16 (-11%)	18 (-51%)	37 (-10%)	41 (-27%)	56 (+4%)	54
<b>Earbuds Sold (Tracking Since 6/2016)</b>	12	122 (-7%)	131 (-72%)	462 (-14%)	538 (+29%)	416 (+151%)	166

## Fines and Fees

Overdue Fines Dropped in 2017

December 2021

	BDL Monthly Total	BDL YTD	BDL Year End (Year-over-Year Change)				
			2020	2019	2018	2017	2016
<b>Fines and Fees Payments Received</b>	\$ 61.29	\$ 1,409.59 (-18%)	\$ 1,717.01 (-44%)	\$ 3,092.62 (+28%)	\$ 2,412.73 (-68%)	\$ 7,628.31 (-24%)	\$ 10,062.96 (-30%)
<b>Outstanding Fines and Fees</b>	\$ 8,576.40		53,362.56 (-4%)	55,588.42 (0%)	55,850.27 (-34%)	84,232.33 (-63%)	228,102.90 (+3%)

## Debt Collections

Unique Management Services, Inc.  
Tracking Since 2014

December 2021

	BDL Monthly Total	BDL YTD	BDL Year End (Year-over-Year Change)				
			2020	2019	2018	2017	2016
<b>Fine Payments as a Result of Collection Agency's Efforts</b>	\$ 0.00	\$ 0.00	\$ 0.00	\$ 268.00 (-94%)	\$ 4,183.45 (+1,727%)	\$ 229.00 (-76%)	\$ 947.13 (+16%)
<b>Library Materials Returned as a Result of Collection Agency's Efforts</b>	\$ 0.00	\$ 0.00	\$ 0.00	\$ 0.00	\$ 462.00 (-48%)	\$ 888.95 (-33%)	\$ 1,317.93 (-2%)
<b>What We Paid Collection Agency for Their Services</b>	\$ 0.00	\$ 0.00	\$ 0.00	\$ 134.10 (-75%)	\$ 528.66 (-5%)	\$ 558.08 (-45%)	\$ 1,022.23 (-3%)



## Value to Our Service Area

Visit <https://www.BranchDistrictLibrary.org/value>  
to learn how we determine these numbers.

December 2021

	BDL Monthly Total	BDL YTD	BDL Year End (Year-over-Year Change)				
			2020	2019	2018	2017	2016
Value from Physical Item Checkouts	\$ 89,347.86	\$ 1,048,840.66 (+27%)	\$ 822,979.52 (-53%)	\$ 1,755,554.08 (-7%)	\$ 1,888,907.75 (-12%)	\$ 2,135,671.28 (+0%)	\$ 2,132,387.79 (-2%)
Value from Attending Programs (Tracking Since 1/2018)	\$ 6,340.00	\$ 78,390.00 (-38%)	\$ 126,690.00 (+7%)	\$ 118,485.00 (-6%)	\$ 125,795.00	\$ 0.00	\$ 0.00
Value from Fax Service (Tracking Since 1/2018)	\$ 609.00	\$ 6,534.00 (+61%)	\$ 4,056.00 (-60%)	\$ 10,205.00 (+6%)	\$ 9,668.00	\$ 0.00	\$ 0.00
Value from Free Prints (Tracking Since 1/2018)	\$ 41	\$ 443 (+173%)	\$ 163 (-61%)	\$ 419 (-23%)	\$ 545	\$ 0	\$ 0
Value from Notary Services (Tracking Since 1/2018)	\$ 40.00	\$ 320.00 (+42%)	\$ 225.00 (-53%)	\$ 475.00 (+44%)	\$ 330.00	\$ 0.00	\$ 0.00
Value from Digital Services (Tracking Since 1/2018)	\$ 10,168.00	\$ 145,136.00 (+5%)	\$ 138,316.00 (+2%)	\$ 135,824.00 (+7%)	\$ 127,476.00	\$ 0.00	\$ 0.00
Value from Using Library Computers (Tracking Since 1/2018)	\$ 2,448.57	\$ 20,205.54 (+12%)	\$ 18,094.74 (-75%)	\$ 72,841.08 (-2%)	\$ 74,104.66	\$ 0.00	\$ 0.00
Value from Using Library Wifi (Tracking Since 1/2018)	\$ 1,669.57	\$ 17,897.18 (-10%)	\$ 19,942.44 (-40%)	\$ 33,232.50 (+2%)	\$ 32,565.33	\$ 0.00	\$ 0.00
<b>TOTAL Value of Free Library Services</b>	<b>\$ 110,663.80</b>	<b>\$ 1,317,766.78 (+17%)</b>	<b>\$ 1,130,466.45 (-47%)</b>	<b>\$ 2,127,036.06 (-6%)</b>	<b>\$ 2,259,391.39 (+6%)</b>	<b>\$ 2,135,671.28 (+0%)</b>	<b>\$ 2,132,387.79 (-2%)</b>

## Materials Expenditures

Tracking since 2018

December 2021

	BDL Monthly Total	BDL YTD	BDL Year End (Year-over-Year Change)				
			2020	2019	2018	2017	2016
Amount Spent on Books	\$ 11,368.45	\$ 108,851.89 (+27%)	\$ 85,727.68 (+12%)	\$ 76,878.30 (-18%)	\$ 93,763.50	\$ 0.00	\$ 0.00
Amount Spent on Periodicals	\$ 4,409.80	\$ 5,051.01 (-6%)	\$ 5,390.61 (-5%)	\$ 5,663.99 (-20%)	\$ 7,085.59	\$ 0.00	\$ 0.00
Amount Spent on Audiovisual Materials	\$ 9,088.93	\$ 23,646.40 (+39%)	\$ 16,992.04 (+13%)	\$ 15,009.96 (-17%)	\$ 17,998.47	\$ 0.00	\$ 0.00
Amount Spent on Digital Resources	\$ 13,717.94	\$ 42,439.73 (+34%)	\$ 31,708.66 (+12%)	\$ 28,412.62 (-35%)	\$ 43,798.90	\$ 0.00	\$ 0.00
<b>TOTAL Spent on All Library Materials</b>	<b>\$ 38,585.12</b>	<b>\$ 179,989.03 (+29%)</b>	<b>\$ 139,818.99 (+11%)</b>	<b>\$ 125,964.87 (-23%)</b>	<b>\$ 162,646.46</b>	<b>\$ 0.00</b>	<b>\$ 0.00</b>

## Other Expenditures

Tracking since 2018

December 2021

	BDL Monthly Total	BDL YTD	BDL Year End (Year-over-Year Change)				
			2020	2019	2018	2017	2016
Total Materials Expenditures	\$ 38,585.12	\$ 179,989.03 (+29%)	\$ 139,818.99 (+11%)	\$ 125,964.87 (-23%)	\$ 162,646.46	\$ 0.00	\$ 0.00
Total Staff Expenditures	\$ 78,423.51	\$ 963,961.23 (+1%)	\$ 956,326.38 (-18%)	\$ 1,172,756.92 (-20%)	\$ 1,469,560.33	\$ 0.00	\$ 0.00
Expenditures in other categories	\$ 93,956.84	\$ 860,839.79 (+78%)	\$ 483,894.79 (+37%)	\$ 353,231.25 (-16%)	\$ 422,747.74	\$ 0.00	\$ 0.00
<b>TOTAL Expenditures in all Categories</b>	<b>\$ 172,380.35</b>	<b>\$ 1,865,487.82 (+3%)</b>	<b>\$ 1,819,492.24 (+1%)</b>	<b>\$ 1,797,240.67 (-13%)</b>	<b>\$ 2,054,954.53</b>	<b>\$ 0.00</b>	<b>\$ 0.00</b>

## Staffing

December 2021

	BDL Monthly Total	BDL YTD	BDL Year End (Year-over-Year Change)				
			2020	2019	2018	2017	2016
Total BDL Staff	35	35 (avg) (-3%)	36 (avg) (-3%)	37 (avg) (-8%)	40 (avg) (+5%)	37 (avg) (+9%)	34 (avg) (+17%)
BDL Staff with MLS Degree	5	5 (avg)	5 (avg) (+25%)	5 (avg) (-33%)	6 (avg) (+20%)	5 (avg) (+150%)	3 (avg)
Worked Full-Time Equivalents	18.13	21.71 (avg) (-13%)	24.53 (avg) (-4%)	25.78 (avg) (-4%)	26.92 (avg) (+8%)	24.91 (avg) (+41%)	17.90 (avg) (+13%)
Hours of Specialized Training for Staff (Tracking Since 1/2019)	29	763 (-35%)	1,170 (+119%)	534	0	0	0
Hours Volunteers Worked at the Library (Tracking Since 1/2019)	60	128 (+228%)	39 (-96%)	1,065	0	0	0

## Outreach Services

Began 2018

December 2021

	BDL Monthly Total	BDL YTD	BDL Year End (Year-over-Year Change)				
			2020	2019	2018	2017	2016
Number of Patrons Served by Outreach Services	10	120 (+186%)	42 (-40%)	70 (-8%)	76 (+2,433%)	3	0
Number of Items Delivered to Outreach Patrons	36	548 (+126%)	242 (+10%)	220 (-64%)	606 (+2,231%)	26	0

## Coldwater Branch Heritage Room

Stats part of Coldwater Branch totals above; shown here for convenience.

December 2021

	Heritage Room	BDL YTD	BDL Year End (Year-over-Year Change)				
			2020	2019	2018	2017	2016
Heritage Room Attendance	11	202 (+92%)	105 (-78%)	484 (-34%)	736 (+12%)	658 (-7%)	705 (+51%)
In-Person Reference Questions	12	74 (-8%)	80 (-81%)	412 (-42%)	708 (+29%)	550 (+664%)	72 (+140%)
Reference Telephone Calls	7	115 (+92%)	60 (-74%)	232 (-16%)	277 (-36%)	433 (+15%)	376 (+83%)
Online Reference Questions	1	42 (+24%)	34 (-48%)	65 (+8%)	60 (-5%)	63 (-24%)	83 (+8%)

## Coldwater Branch Kids' Place

Stats part of Coldwater Branch totals above; shown here for convenience.  
Tracking separately since April 2019.

December 2021

	Kids' Place	BDL YTD	BDL Year End (Year-over-Year Change)				
			2020	2019	2018	2017	2016
Kids' Place Attendance	589	4,445 (+86%)	2,385 (-75%)	9,710	0	0	0
In-Person Reference Questions	70	740 (+227%)	226 (-61%)	575	0	0	0
Reference Telephone Calls	18	214 (+37%)	156 (-30%)	224	0	0	0
Online Reference Questions	0	2	0	0	0	0	0

## Coldwater Branch Teen Space

Stats part of Coldwater Branch totals above; shown here for convenience.  
Tracking separately since April 2019.

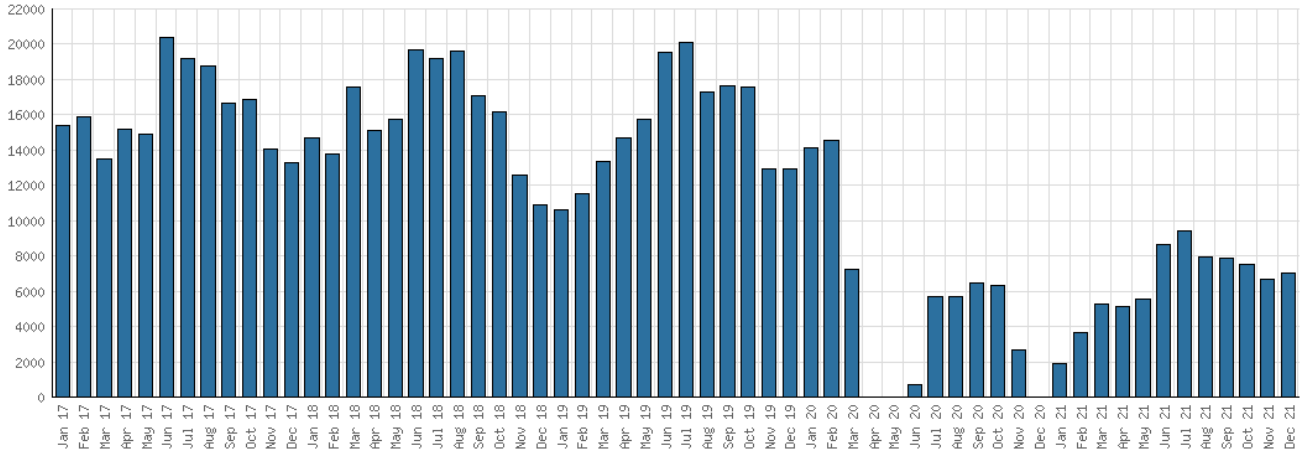
December 2021

	Teen Space	BDL YTD	BDL Year End (Year-over-Year Change)				
			2020	2019	2018	2017	2016
Teen Space Attendance	25	706 (-16%)	845 (-80%)	4,172	0	0	0
In-Person Reference Questions	2	13 (+225%)	4 (-96%)	93	0	0	0
Reference Telephone Calls	0	0	0	0	0	0	0
Online Reference Questions	0	0	0	0	0	0	0

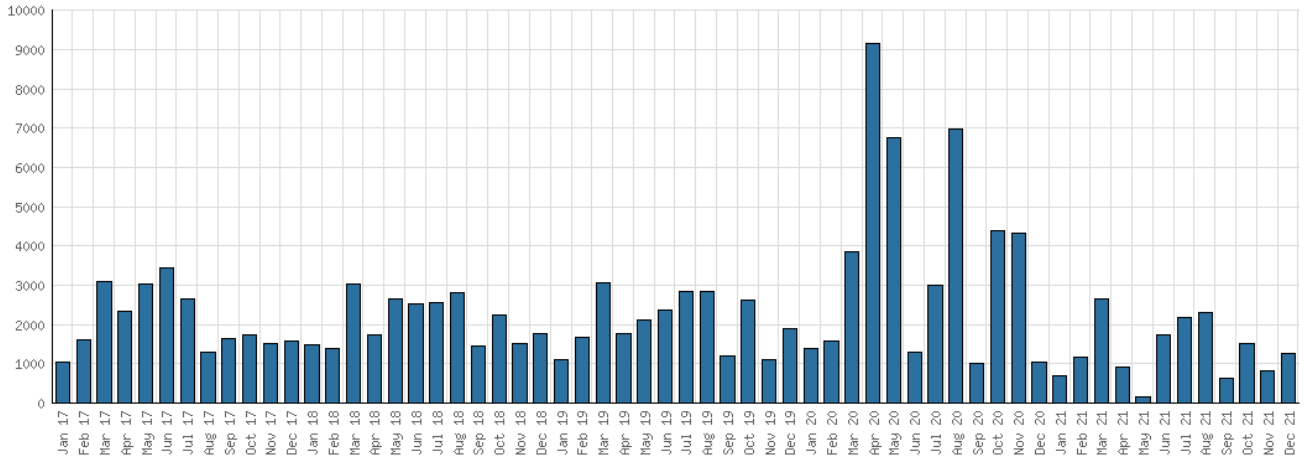
## Selected Graphs

### 5-year Monthly Trends

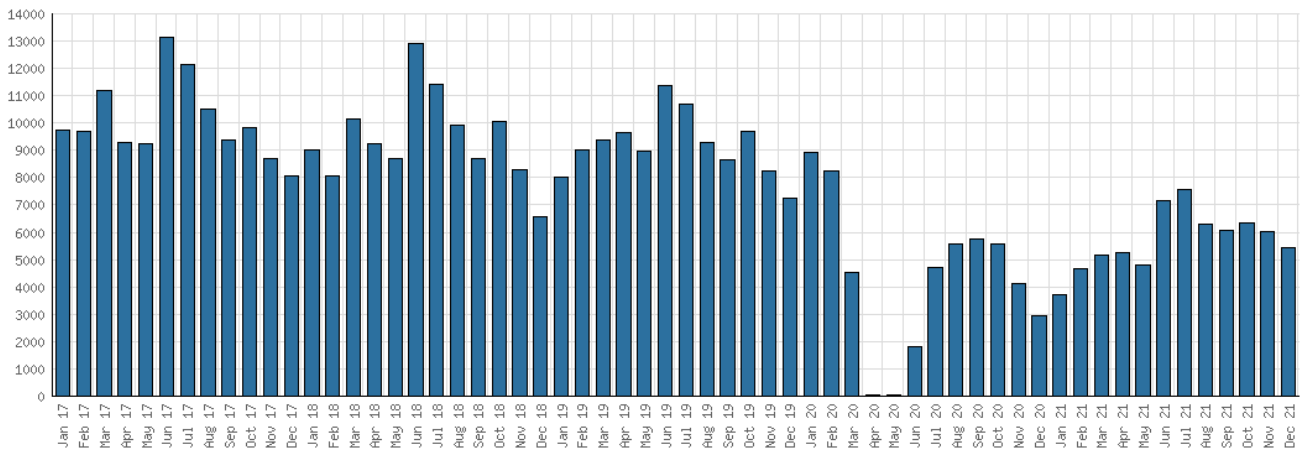
#### District Attendance



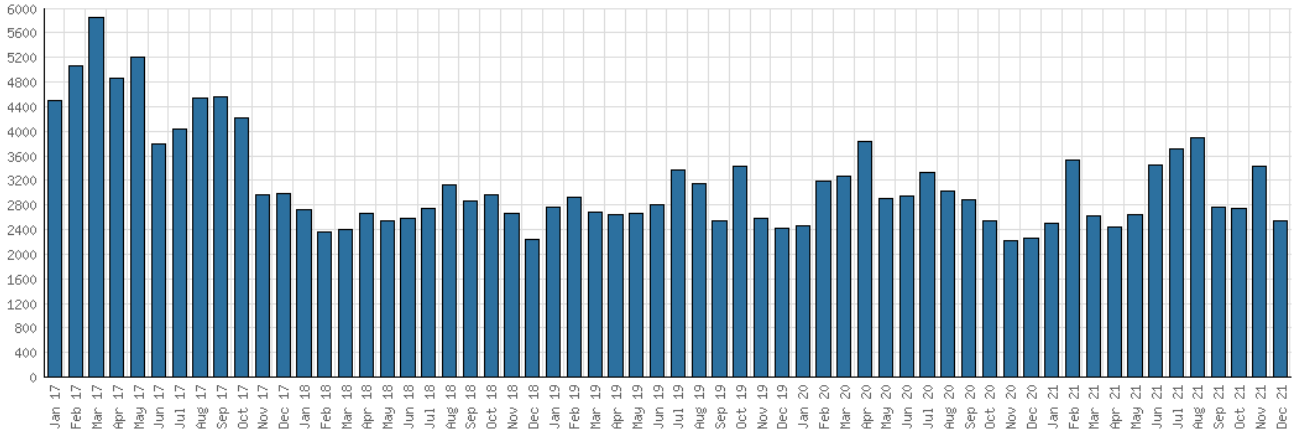
#### District Program Attendance



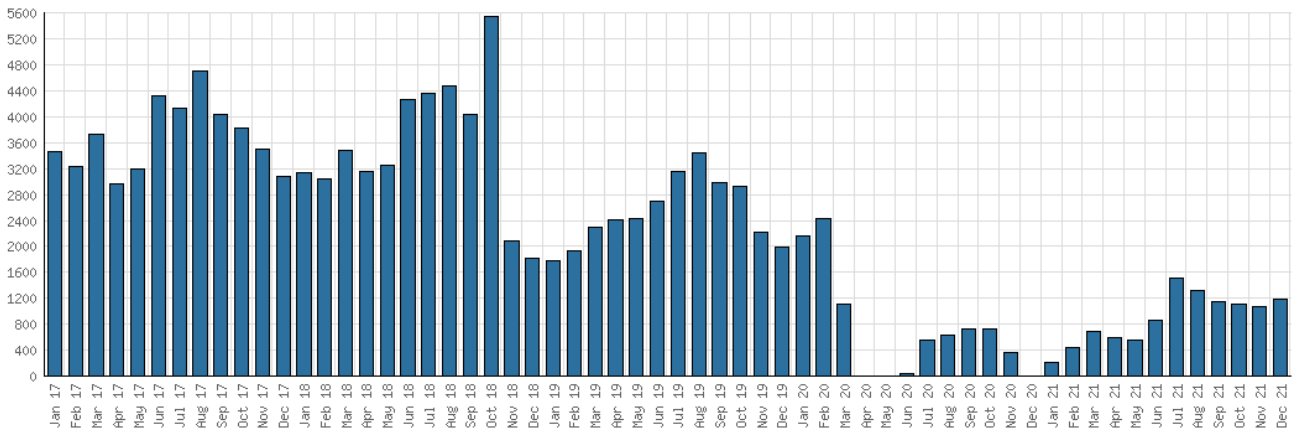
#### District Physical Checkouts



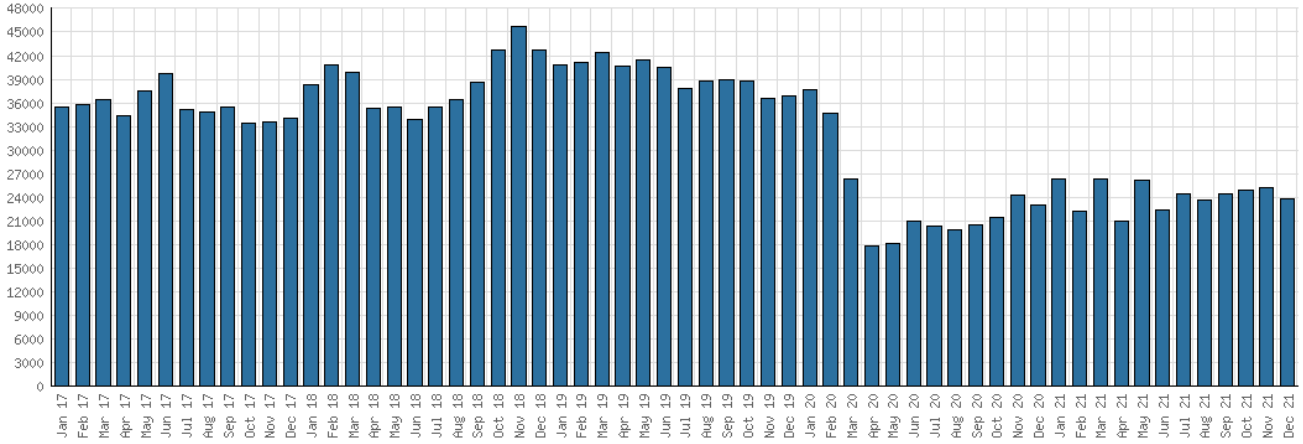
District Digital Usage



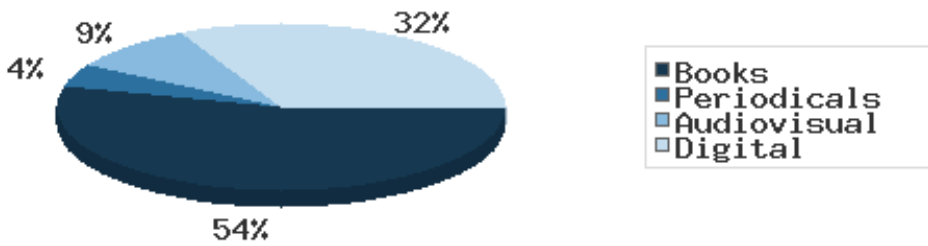
District Use of Library-Provided Computers



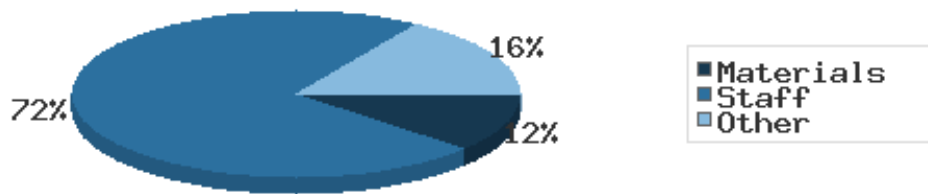
District One-Hour Sessions on Library Wifi



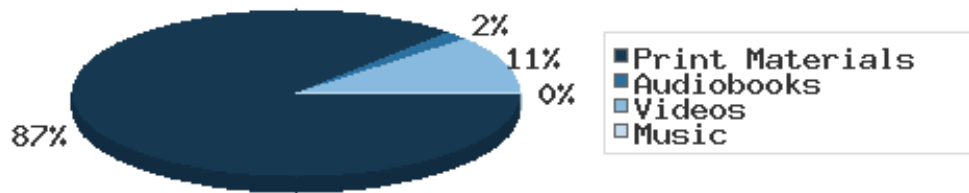
Year-to-Date Materials Expenditures



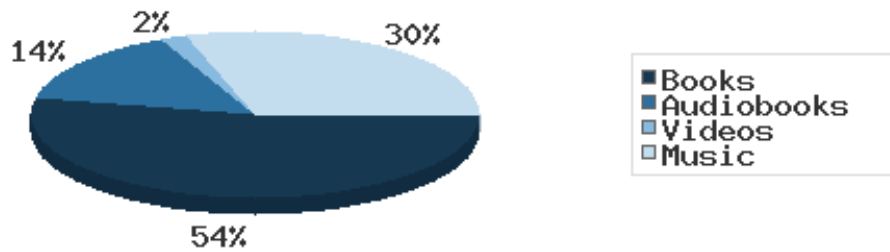
### YTD Expenditures in all Categories



### Physical Collection



### Digital Collection



### YTD Usage Breakdown of Digital Services

